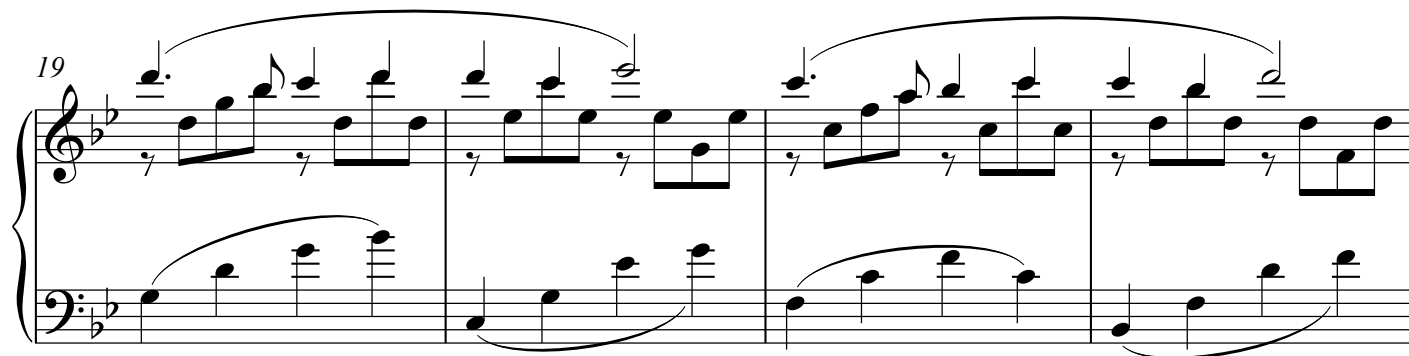
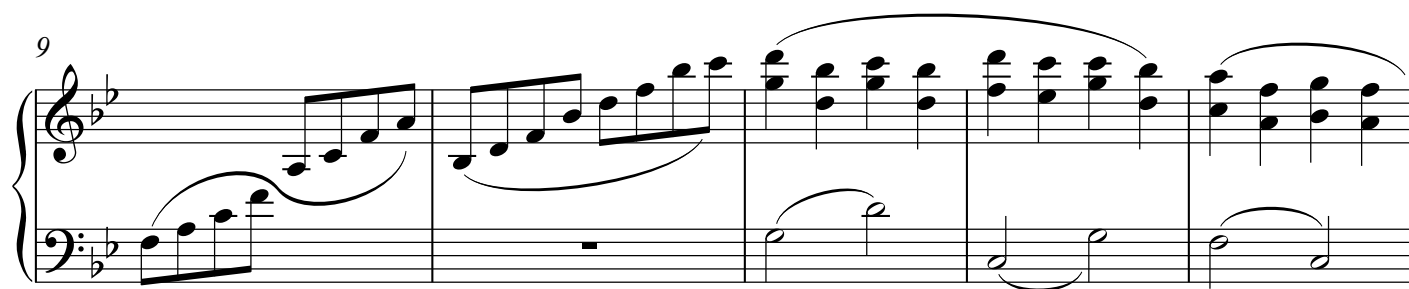
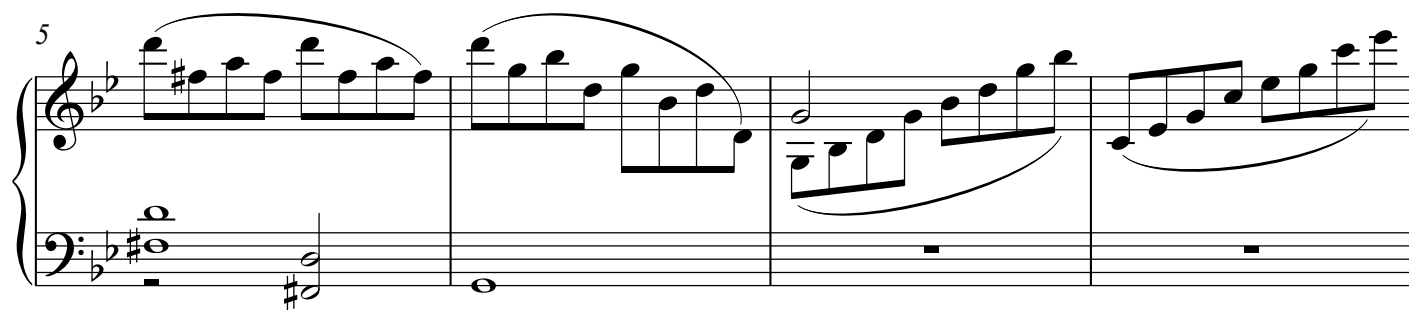
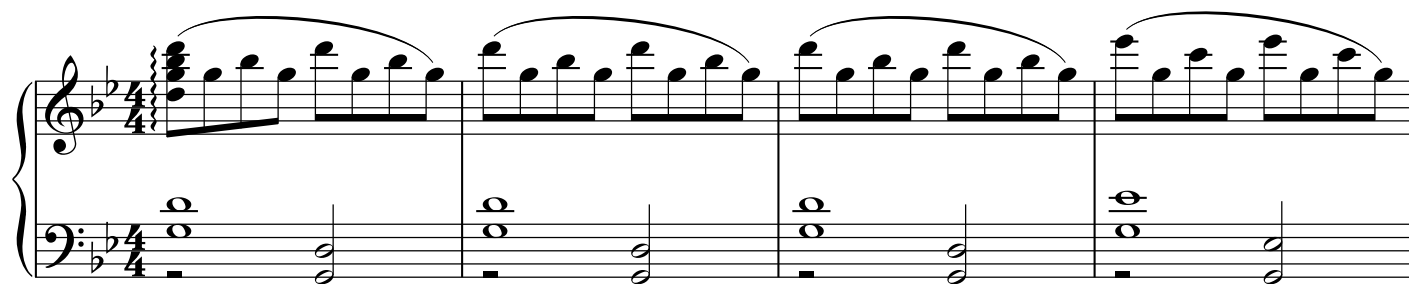


Piano

Тает время быстрое



23

Measures 23-26 of a piano piece. The key signature has two flats (B-flat and E-flat). The melody in the right hand features eighth-note patterns with slurs and ties, while the left hand provides a steady accompaniment of quarter notes.

27

Measures 27-30. The right hand continues with eighth-note runs, and the left hand introduces a more active bass line with eighth notes and ties.

31

Measures 31-36. The right hand features a series of eighth-note patterns, some with slurs. The left hand has a mix of quarter and eighth notes, ending with a whole note chord in measure 36.

37

Measures 37-42. The right hand consists of sustained chords and single notes, while the left hand plays a rhythmic pattern of eighth notes with ties.

43

Measures 43-46. The right hand features chords and eighth-note patterns. The left hand has a melodic line with slurs and ties. The piece concludes with a double bar line in measure 46.

Piano

3

49

Measures 49-52 of a piano piece. The key signature has two flats (B-flat and E-flat). Measure 49 starts with a whole note chord in the right hand (F4, A-flat4, C5) and a half note in the left hand (B-flat3). Measure 50 features a descending eighth-note scale in the right hand (G4, F4, E-flat4, D4) and an ascending eighth-note scale in the left hand (B-flat3, A3, G3, F3). Measure 51 has a half note chord in the right hand (F4, A-flat4, C5) and a half note chord in the left hand (B-flat3, A3). Measure 52 continues with a half note chord in the right hand (F4, A-flat4, C5) and a half note chord in the left hand (B-flat3, A3). A long slur covers measures 49 through 52.

53

Measures 53-55 of a piano piece. Measure 53 has a half note chord in the right hand (F4, A-flat4, C5) and a half note chord in the left hand (B-flat3, A3). Measure 54 features a descending eighth-note scale in the right hand (G4, F4, E-flat4, D4) and a half note chord in the left hand (B-flat3, A3). Measure 55 continues with a half note chord in the right hand (F4, A-flat4, C5) and a half note chord in the left hand (B-flat3, A3). A long slur covers measures 53 through 55.

56

Measures 56-58 of a piano piece. Measure 56 has a half note chord in the right hand (F4, A-flat4, C5) and a half note chord in the left hand (B-flat3, A3). Measure 57 features a descending eighth-note scale in the right hand (G4, F4, E-flat4, D4) and a half note chord in the left hand (B-flat3, A3). Measure 58 continues with a half note chord in the right hand (F4, A-flat4, C5) and a half note chord in the left hand (B-flat3, A3). A long slur covers measures 56 through 58.